



# MONTHLY MEMBERSHIP PROGRESS REPORT

District 2 E1

Results as of: 11/30/2017

GMT: JOE AL PICONE

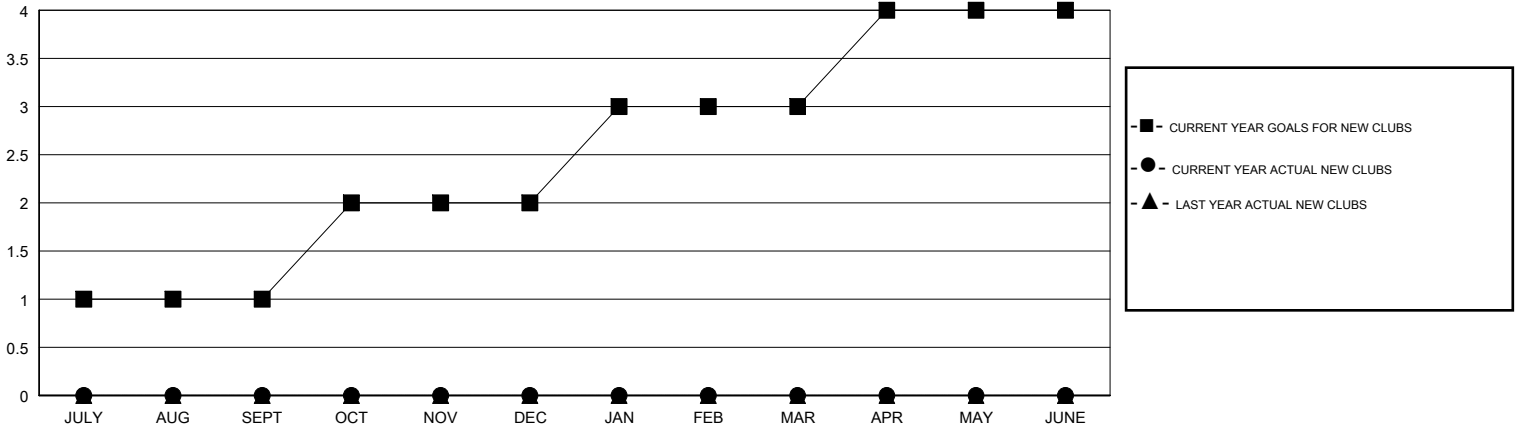
LOCATION TEXAS

GMT CA

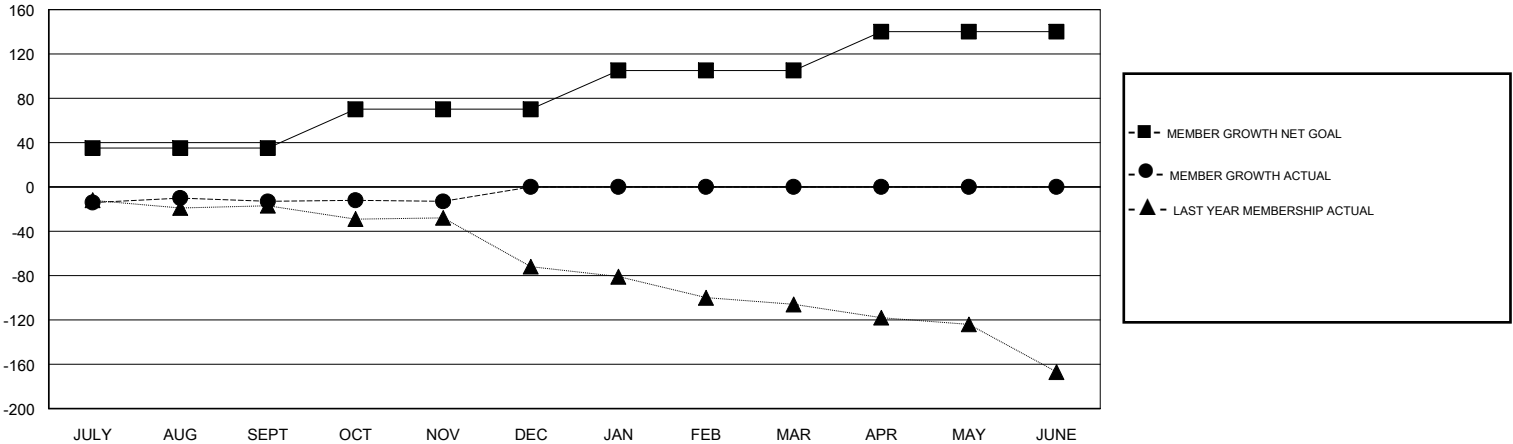
Clubs			
RESULTS FOR 2017-2018			
QUARTER	NEW CLUB GOAL	NEW CLUBS	DROPPED CLUBS
JULY/AUG/SEPT	1	0	0
OCT/NOV/DEC	1	0	1
JAN/FEB/MAR	1	0	0
APR/MAY/JUNE	1	0	0

Members			
RESULTS FOR 2017-2018			
QUARTER	MEMBER GROWTH NET GOAL	MEMBER GROWTH ACTUAL	DROPPED MEMBERS ACTUAL (including transfers)
JULY/AUG/SEPT	35	25	36
OCT/NOV/DEC	35	28	27
JAN/FEB/MAR	35	0	0
APR/MAY/JUNE	35	0	0

GOALS AND ACTUAL NEW CLUBS CUMULATIVE



GOALS AND ACTUAL MEMBERS CUMULATIVE



DROPPED CLUBS: 1
------------------

19 CLUBS OF 51 ADDED 1 OR MORE NEW MEMBERS

GENDER DISTRIBUTION	
MALE	821 (73.63%)
FEMALE	294 (26.37%)
Women Percentage Fiscal Year Goal: 35%	

DROPPED MEMBERS	
DECEASED	3
CLUB CANCELLED	3
OTHER	57
<b>TOTAL</b>	<b>63</b>

[CLICK HERE FOR CUMULATIVE MEMBERSHIP DATA](#)

TOTAL FAMILY UNIT MEMBERS	105
FAMILY MEMBERS PAYING HALF DUES	53